



# GAT MONTHLY MEMBERSHIP PROGRESS REPORT

Results as of: 5/31/2022

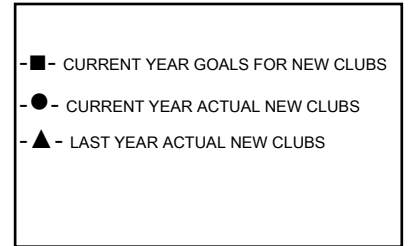
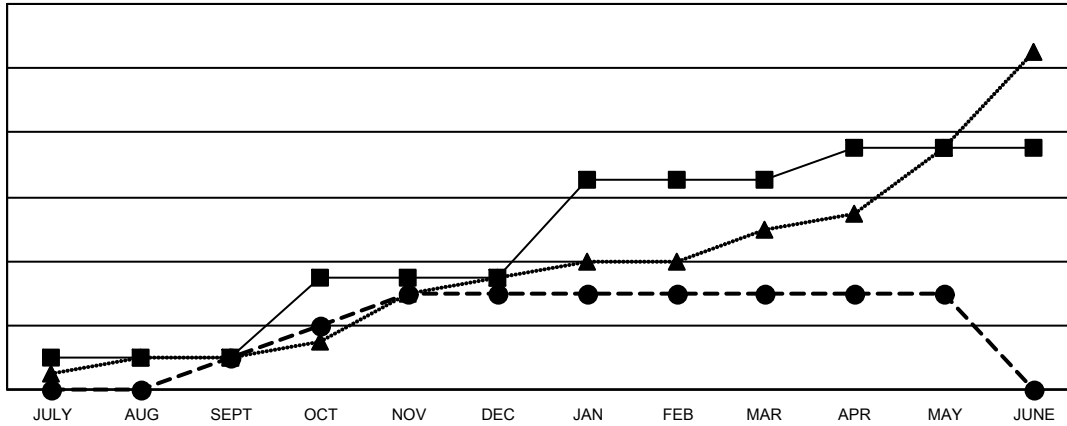
Multiple District A

LOCATION: ONTARIO

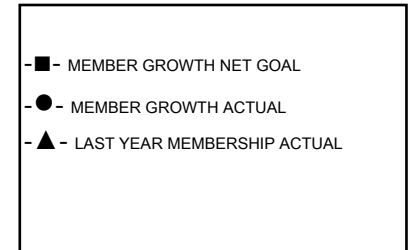
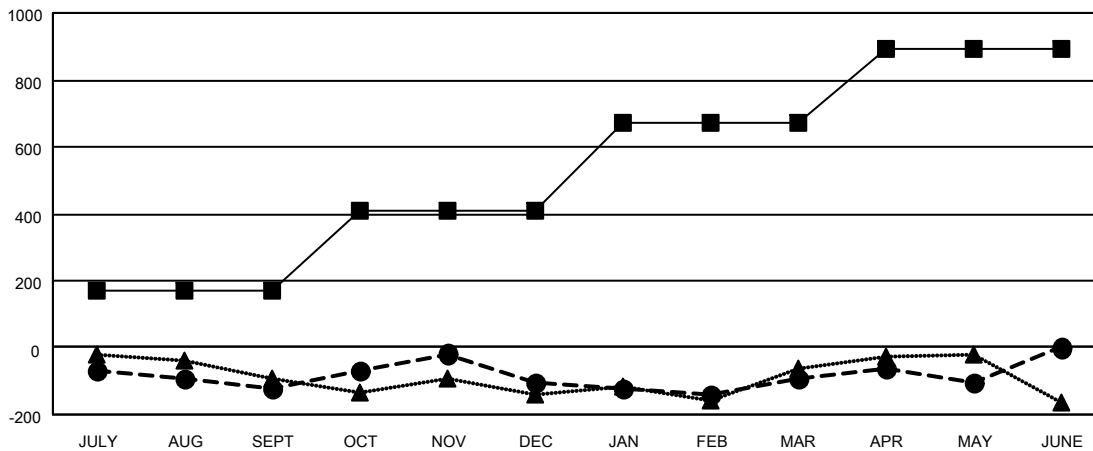
Clubs			
RESULTS FOR 2021-2022			
QUARTER	NEW CLUB GOAL	NEW CLUBS	DROPPED CLUBS
JULY/AUG/SEPT	2	2	3
OCT/NOV/DEC	5	4	2
JAN/FEB/MAR	6	0	3
APR/MAY/JUNE	2	0	0

Members			
RESULTS FOR 2021-2022			
QUARTER	MEMBER GROWTH NET GOAL	MEMBER GROWTH ACTUAL	DROPPED MEMBERS ACTUAL (including transfers)
JULY/AUG/SEPT	170	256	333
OCT/NOV/DEC	240	484	421
JAN/FEB/MAR	260	331	275
APR/MAY/JUNE	225	233	229

GOALS AND ACTUAL NEW CLUBS CUMULATIVE



GOALS AND ACTUAL MEMBERS CUMULATIVE



<b>DROPPED CLUBS: 8</b>	287 CLUBS OF 539 ADDED 1 OR MORE NEW MEMBERS	<b>GENDER DISTRIBUTION</b>
<b>DROPPED MEMBERS</b>	<a href="#">CLICK HERE FOR CUMULATIVE MEMBERSHIP DATA</a>	MALE 8,081 (65.98%)
DECEASED 200		FEMALE 4,166 (34.01%)
CLUB CANCELLED 38		NON BINARY 0 (0.00%)
OTHER 1,021		PREFER NOT TO ANSWER 1 (0.01%)
<b>TOTAL 1,259</b>		<b>TOTAL FAMILY UNIT MEMBERS 2,244</b>
		<b>FAMILY MEMBERS PAYING HALF DUES 1,161</b>